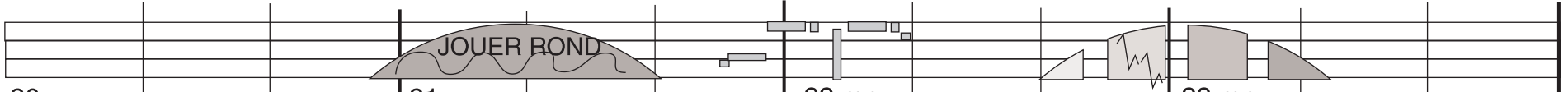
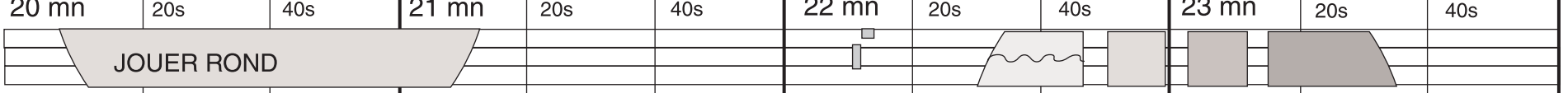


20 mn 20s 40s 21 mn 20s 40s 22 mn 20s 40s 23 mn 20s 40s 24 mn

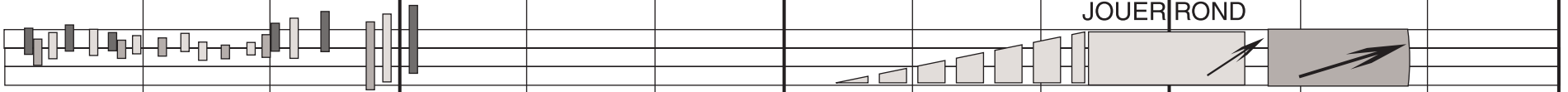
SAXOPHONE
(JULIEN)



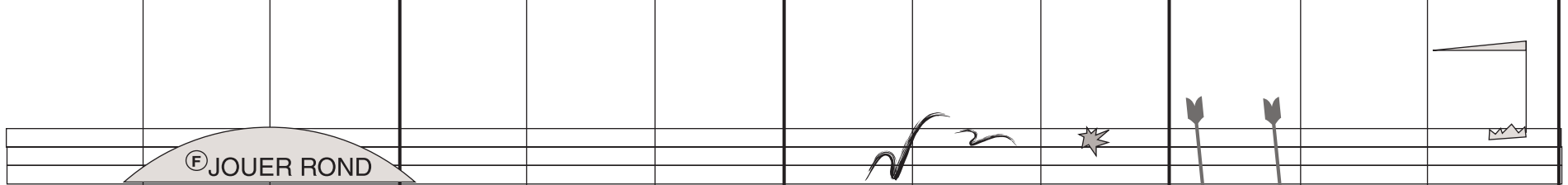
FLÛTE
(PAUL)



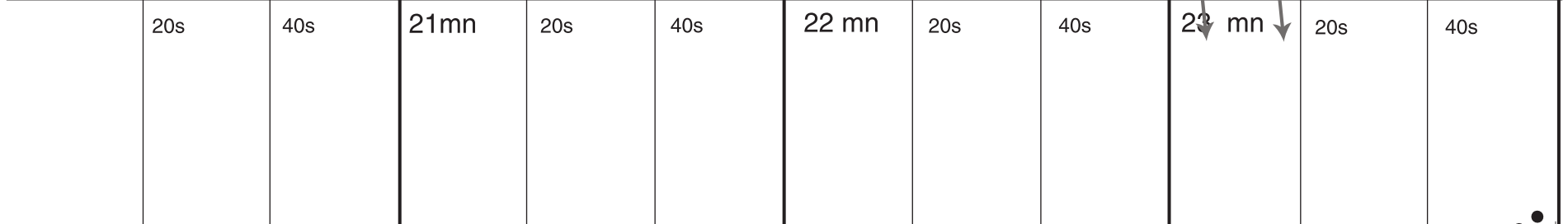
GUITARE
(CATHERINE)



LOILLIEUSE
(FRANÇOIS)



CLARINETTE
(LLDM)



HARPE
(PHILIPPE)



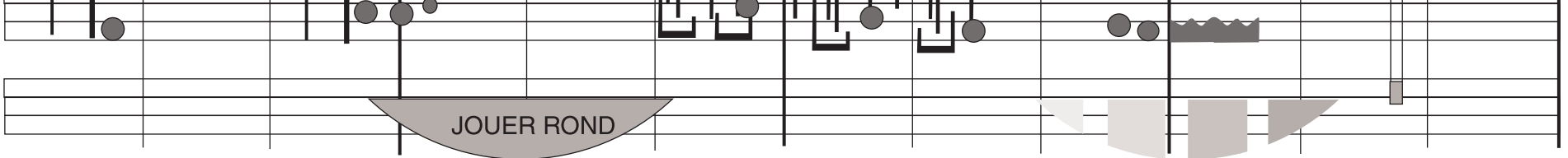
VIOLONCELLE
(BAPTISTE)



PLATINES
(BENJAMIN)



CHANT
(BAUM)



24 mn



